

Albrighton & District Historical Society

What we Do

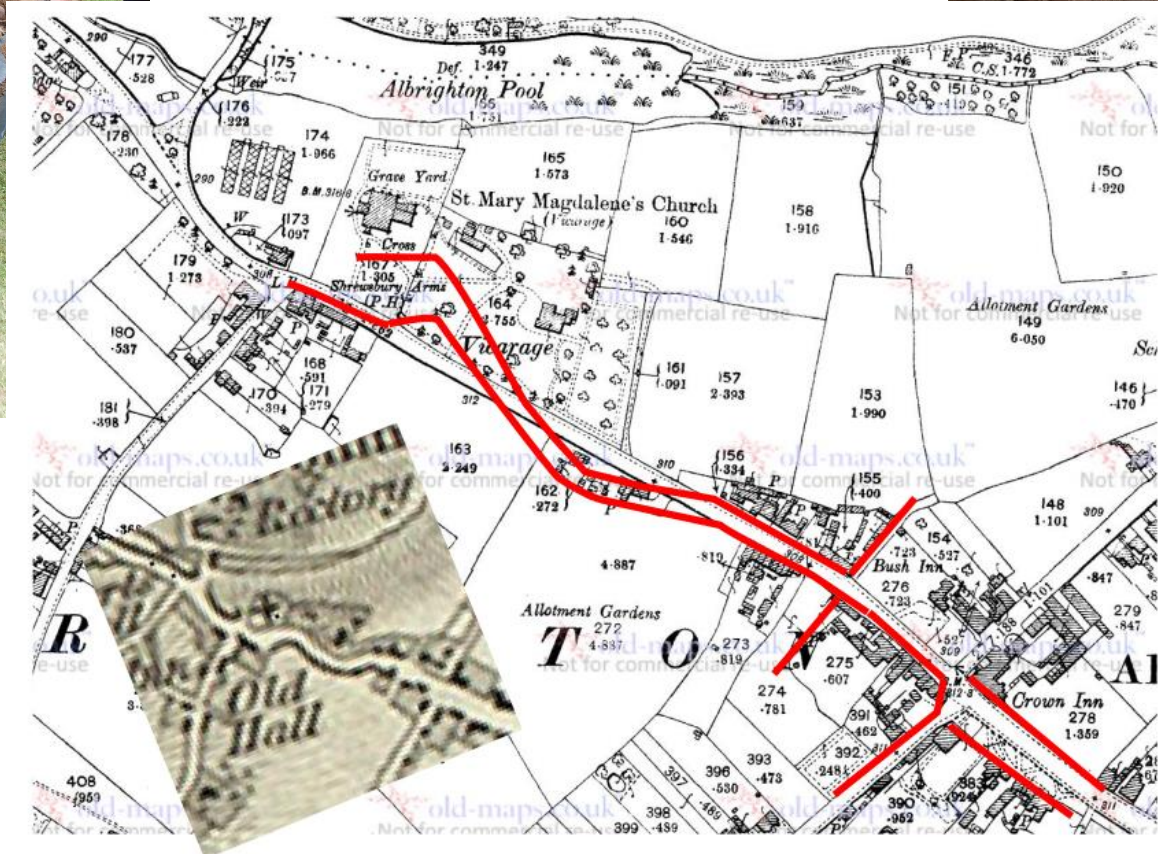
Talks



Archaeology

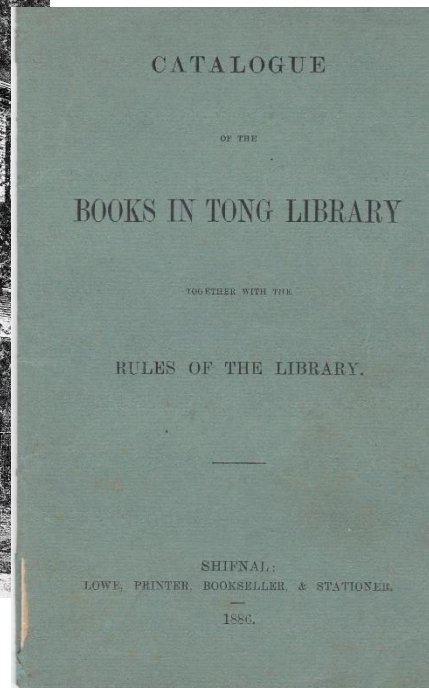
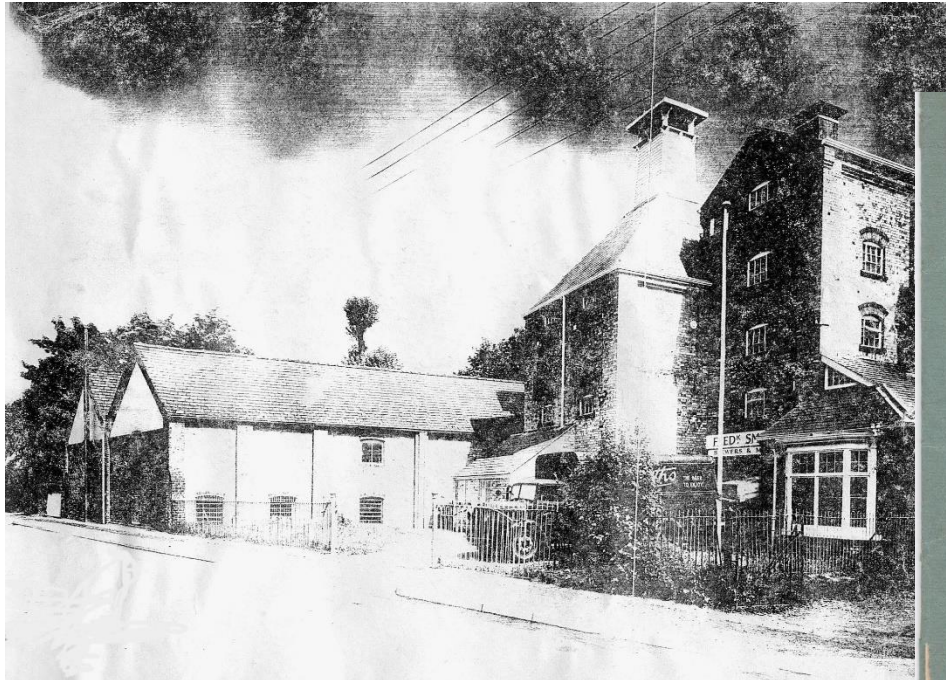
- We work with Wolverhampton Archaeology Group. So far:
- Discovered the Medieval Market House and location of the Market Cross
- Unearthed the remains of the original line of the High Street
- Found Neolithic flints in the Church Yard
- Found vaulted tombs in the Churchyard which time had forgot. One being the family tomb of Rev Woodhouse, vicar of Albrighton from 1837 to 1894



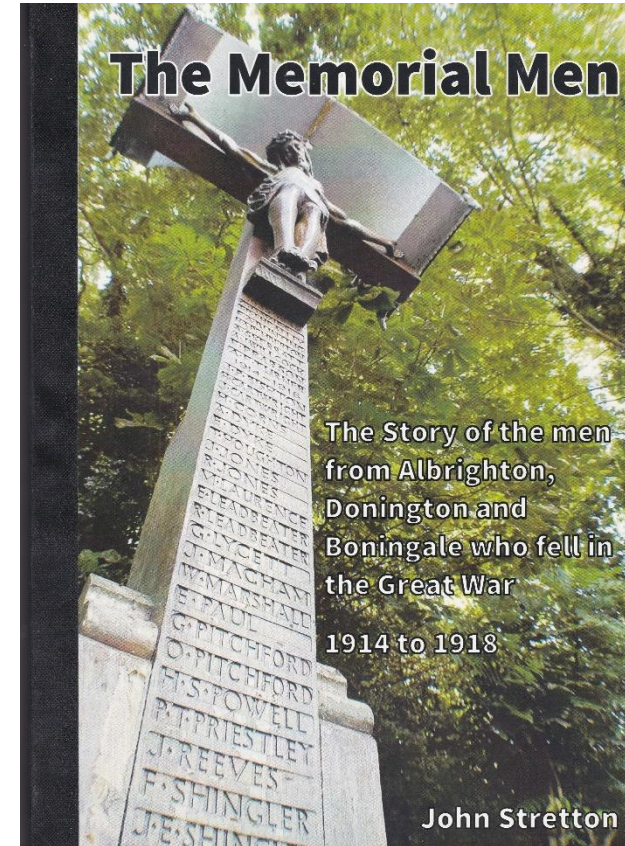
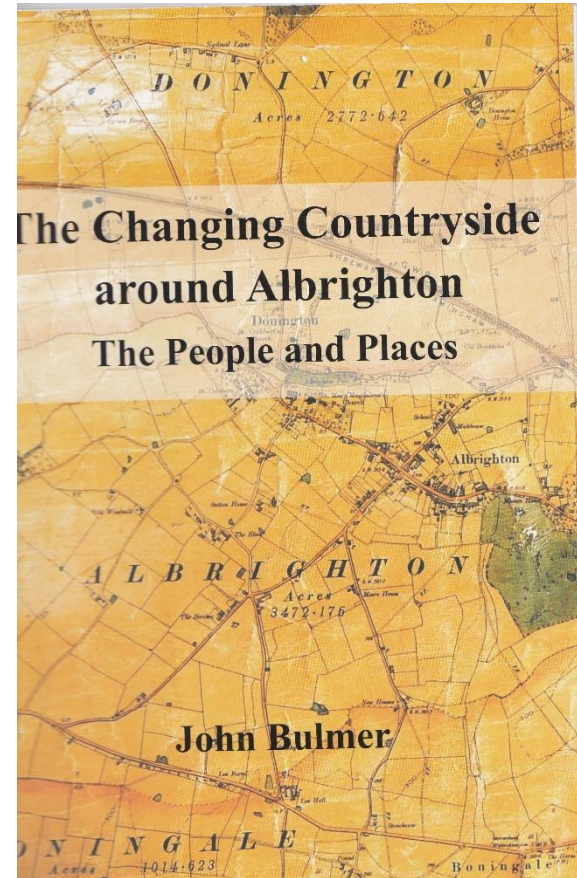
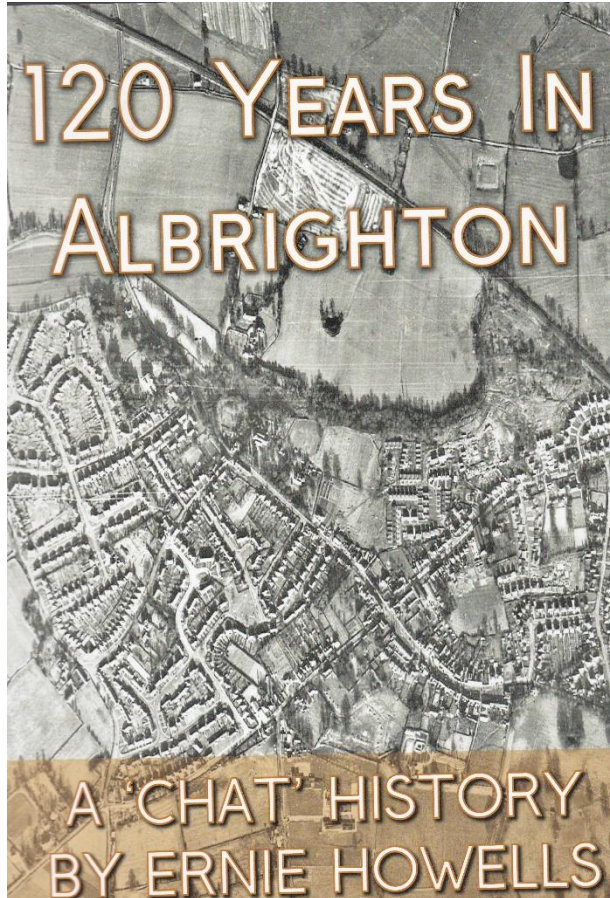


Historical Society Archive

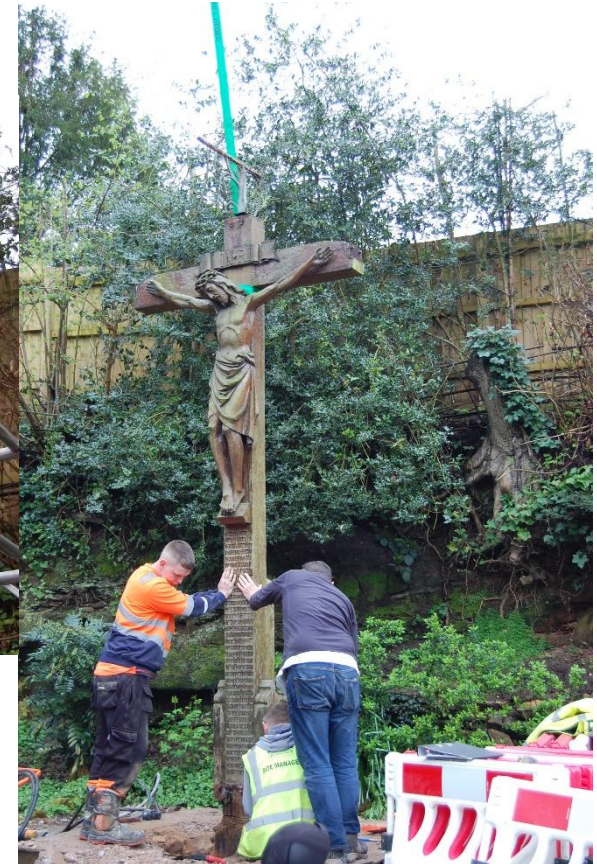
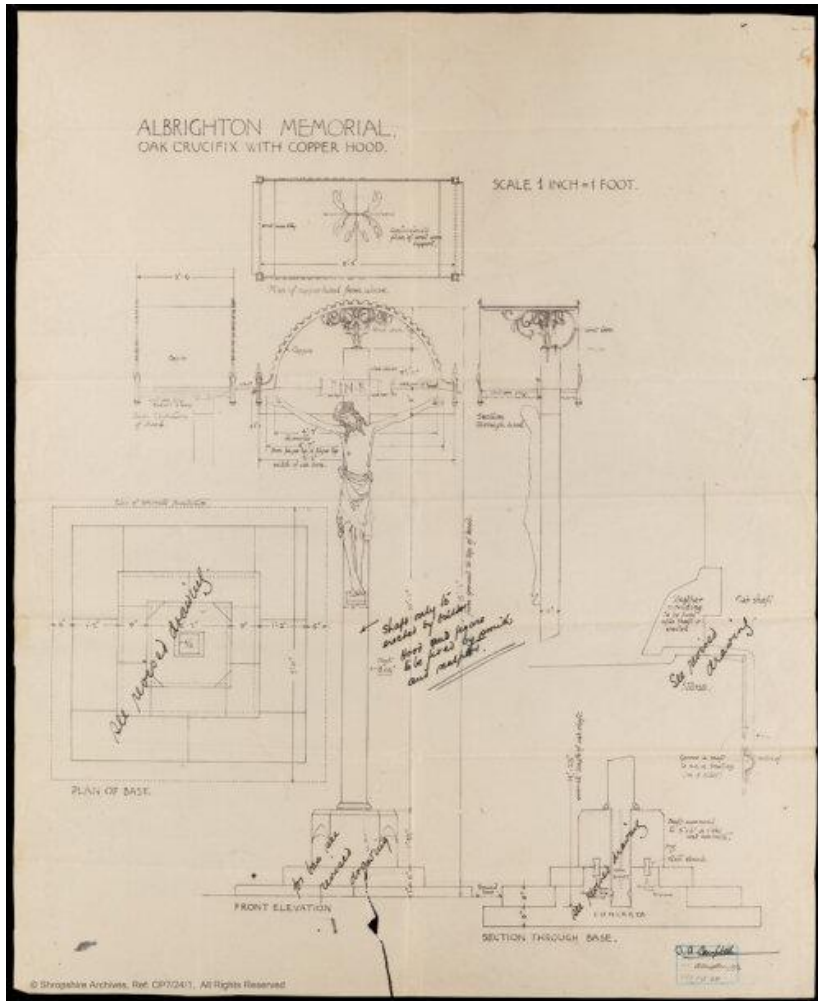
- Documents, Photographs & Recordings



Books and Publications



The War Memorial Project





Our Next Talks & Events

- Monday May 6th Mary Bodfish 'Beer, Bets & Bull Baiting: 17th Century Pastimes'
- Monday June 10th Clive West Wood from Wolverhampton Archaeology Group 'The Albrighton Excavations, the Story so Far'
- Hopefully we will have a D-Day Exhibition in St Mary's Gladys Lloyd Room during the May Beer festival and into June for D-Day
- We start talks again on Monday September 2nd with Andrew Lound 'Apollo: A Moon Odyssey' All talks in Red House start 7.30
- *Come and Join Us!*